

**EAST TENNESSEE PERFORMING ARTS ASSOCIATION
CONTEST INFORMATION
SATURDAY, APRIL 6, 2024**



PO Box 32933, Knoxville, TN 37930

LOCATION

Jefferson County High School
115 W Dumplin Valley Road
Dandridge, TN 37725

EMERGENCY CONTACTS (DAY OF SHOW ONLY)

CONTEST ADMINISTRATOR: Leza Carver / 865-548-9411 / contestcoordinator@etpaa.org
EVENT PARTNER: Jessica Poole / 423-312-1025 / jpoole@jcboe.net

JUDGE PANEL

Panels are available on the ETPAA website.

COMPETITIONSUITE DETAILS

ACCESSING YOUR GROUP - <https://help.competitionsuite.com/article/16-accessing-your-group>
ADDING YOUR STAFF - <https://help.competitionsuite.com/article/61-adding-staff-members>
ACCESSING COMMENTARY - <https://help.competitionsuite.com/article/17-accessing-commentary>
MUSIC UPLOADS - <https://help.competitionsuite.com/article/74-uploading-performance-music>
Score Summary Sheets are also located in your CompetitionSuite account with your overall score.

ADDITIONAL COMPETITION INFO

Draft Schedules are available on the [ETPAA season](#) page.

WARM UP AREAS – Music may be used at moderate levels in both body and equipment.

RETREAT – Full Units. If your group is not attending retreat, please designate one individual (parent, staffer, or designated representative) to stay and retrieve your award at the conclusion of retreat. Please inform the Contest Administrator on site if your group will not be attending retreat.

COMPETITION REMINDERS – <https://www.etpaa.org/forms-info-1>

CODE OF CONDUCT

The Code of Conduct is always in force, including prohibiting the use of alcohol and controlled substances at any ETPAA event.

General conduct of good manners, courtesy, and common sense are generally all that is required to ensure appropriate conduct and behavior. Conduct or language by any participant, staff, or volunteer of any group that a reasonable person could perceive as rude, inappropriate, abusive, disorderly, derogatory, immoral, or threatening will not be tolerated.

Failure of any group to follow prescribed behavior guidelines may result in the denial of any group to participate in competitions or ceremonies. Extreme examples of inappropriate behavior may result in immediate or retroactive disqualification as appropriate. The ETPAA Board of Directors will decide on any such disciplinary action.

Jefferson County High School Site Specs

Site:

Jefferson County High School
115 W Dumplin Valley Rd,
Dandridge, TN 37725

Dimensions:

Front Side Bleacher Rows: 23

Seating Capacity: 1100 appx

Approximate Ceiling Height: appx 30 ft

There are no stairs to contend with in the competition area.

Color Guards/Percussion/Winds do not enter the competition area directly from the outdoors.

There is electrical power available at the front and back sideline.

Color Guards/Percussion/Winds exit the competition area directly to the outdoors.

There is a hallway and common area that will be utilized for prop storage prior to the competition.

The performance floor is a standard wood gym with a one-piece black vinyl tarp covering the performance floor

There is no indoor area for floor refolding

The distance from body warm-up to equipment warm-up is approximately **1 minute**.

The distance from the equipment warm-up to the performance gym is approximately **4 minutes**.

There are separate areas for body and equipment.

The distance from the warm-up A/B to the performance gym is approximately **4 minutes**.

Body/A Warm-Up - Band Room

Dimensions: 44.5ft. X 44ft.

No obstructions in the area.

Music may be used in body warm-up at moderate levels to be determined by the contest administrator.

Equipment/B Warm-Up - Theater

Dimensions: 92ft. X 56ft.

Approximate Ceiling Height: 20.5 ft

No obstructions in the area.

Music may be used in equipment warm-up at moderate levels to be determined by the contest administrator.

The above information is being provided to you in order give you the most complete information we currently have on this contest. All information is subject to change either before or during the event by contest personnel based on need.

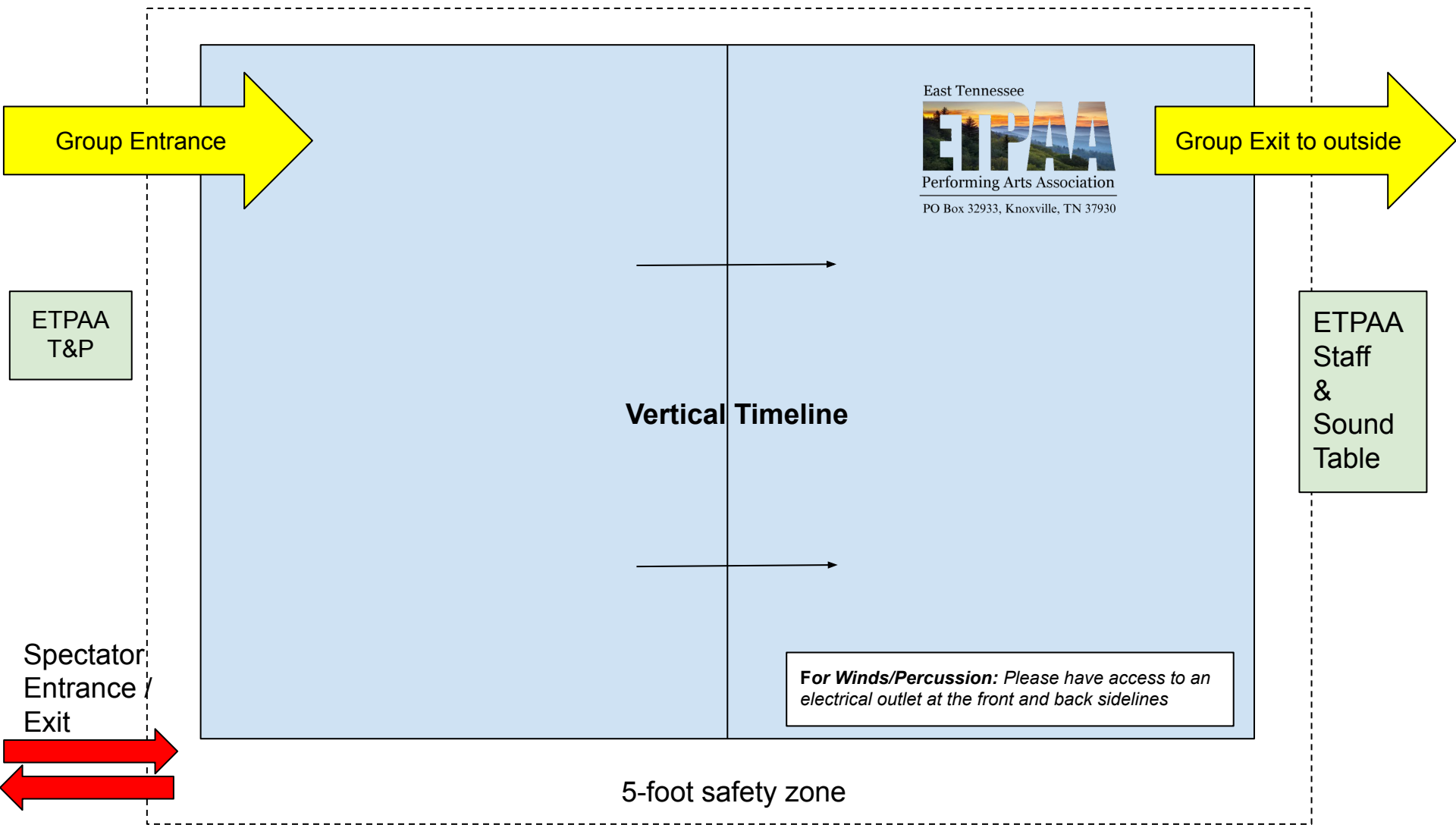
Google Maps Jefferson County High School



Imagery ©2024 Airbus, Maxar Technologies, USDA/FPAC/GEO, Map data ©2024 200 ft

Unit seating - upper back bleachers

Units do a vertical floor fold (side to side) for this event



East Tennessee
ETPAA
Performing Arts Association
PO Box 32933, Knoxville, TN 37930

Group Entrance

Group Exit to outside

ETPAA
T&P

ETPAA
Staff
&
Sound
Table

Vertical Timeline

For Winds/Percussion: Please have access to an electrical outlet at the front and back sidelines

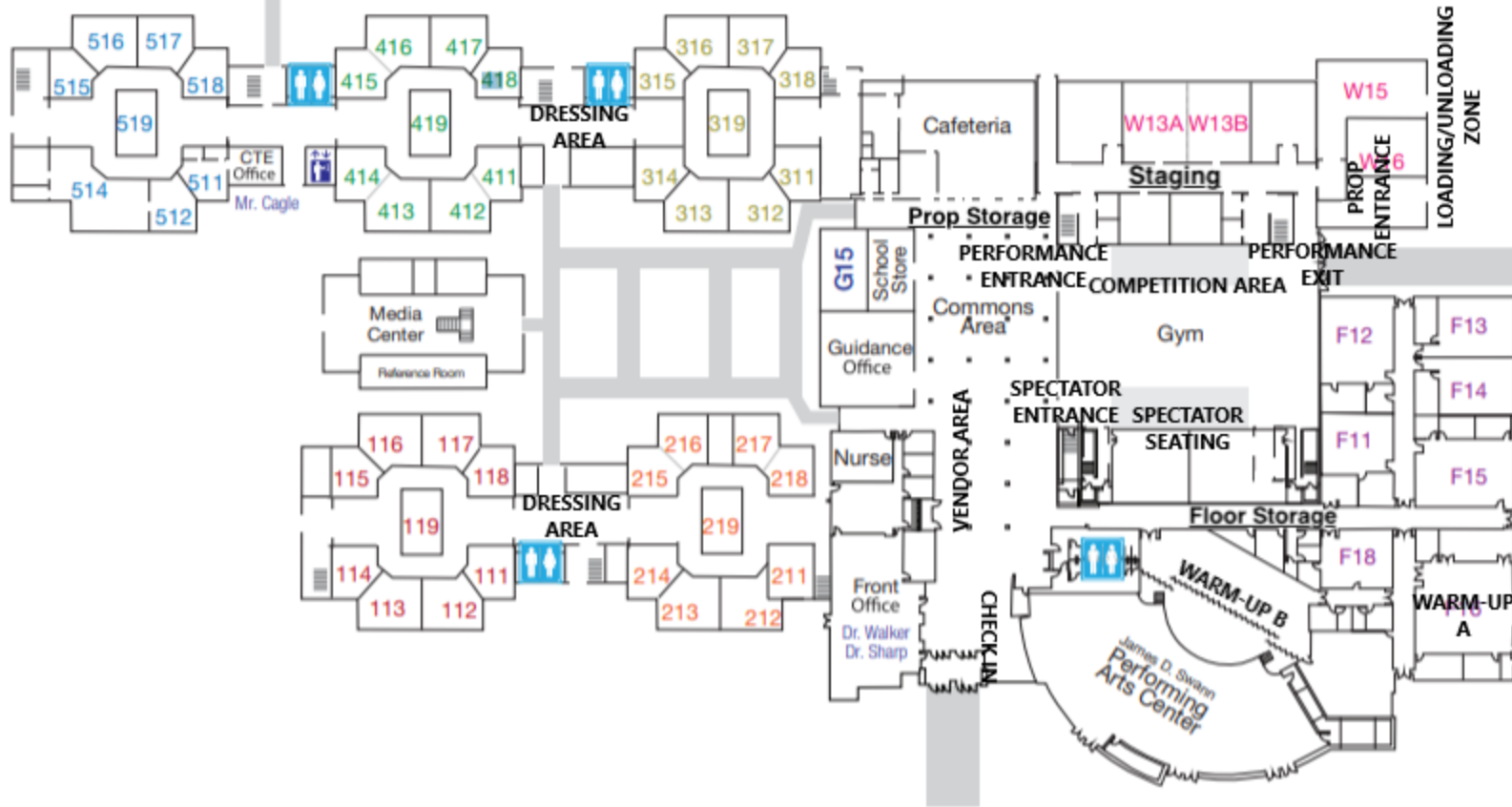
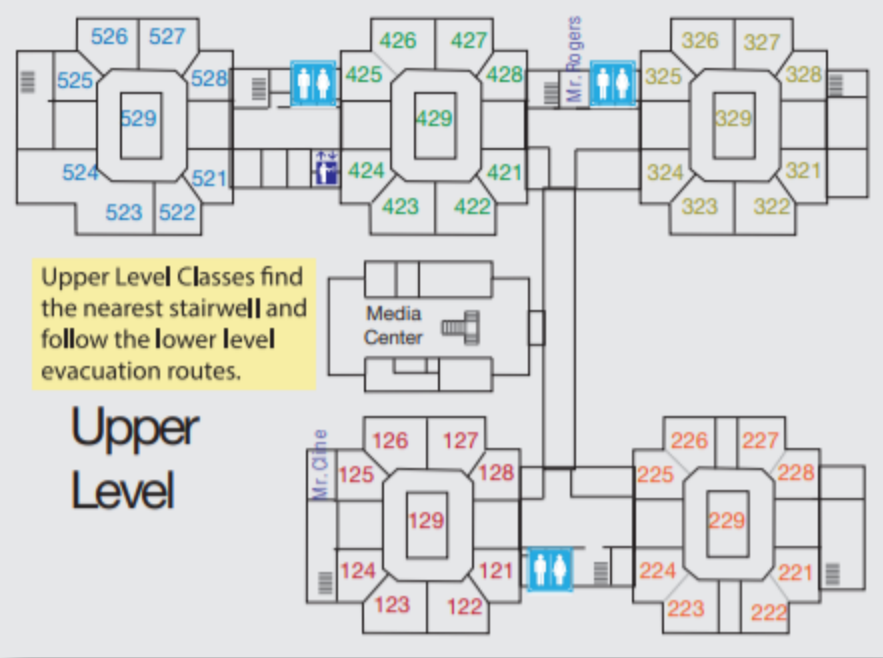
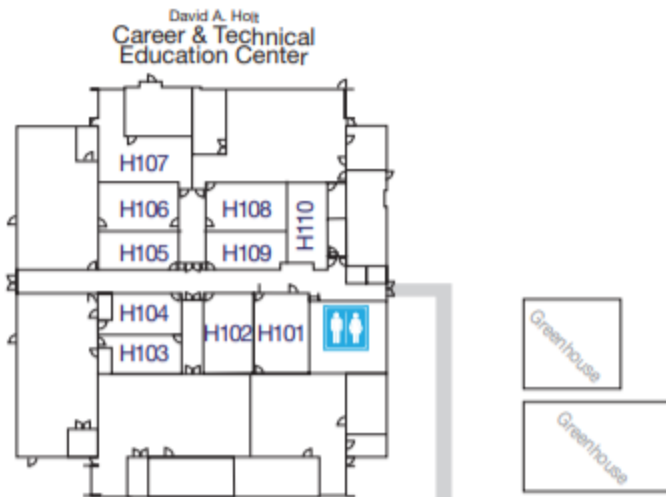
Spectator
Entrance /
Exit

5-foot safety zone

SPECTATOR SEATING



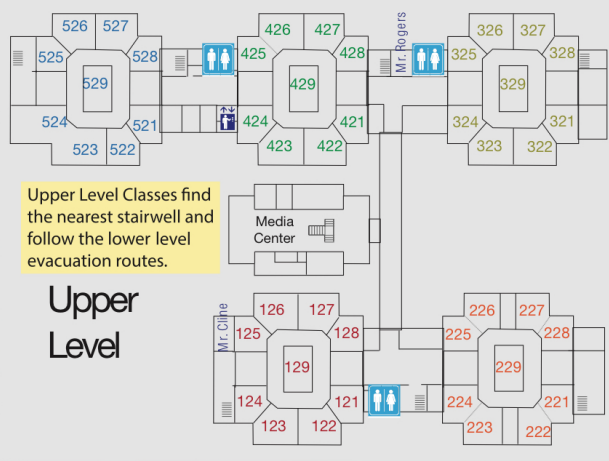
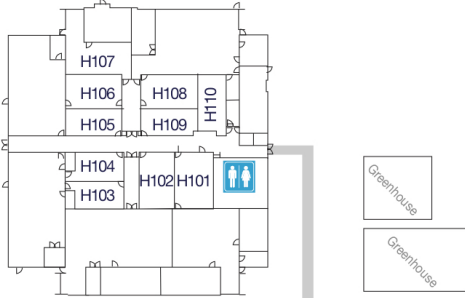
Jefferson County High School Main Campus





Jefferson County High School Main Campus

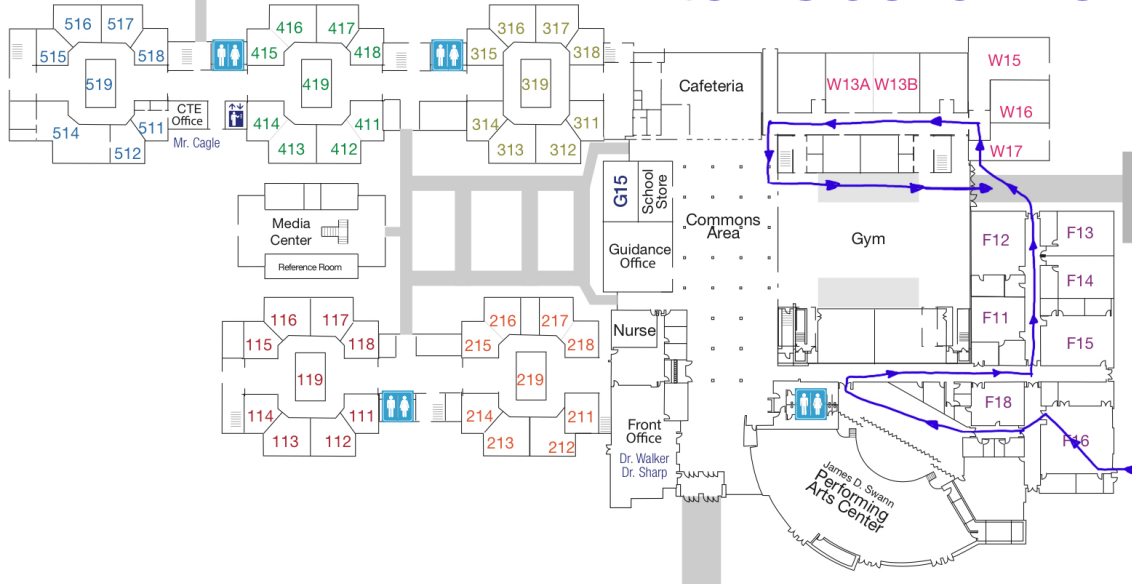
David A. Holt
Career & Technical
Education Center



Upper Level Classes find the nearest stairwell and follow the lower level evacuation routes.

Upper Level

Winter Guard Flow

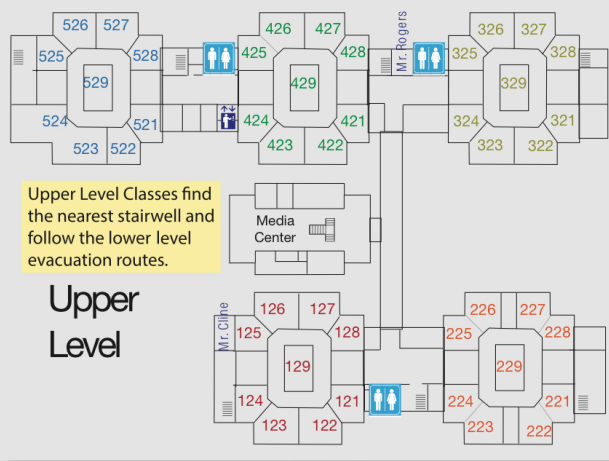
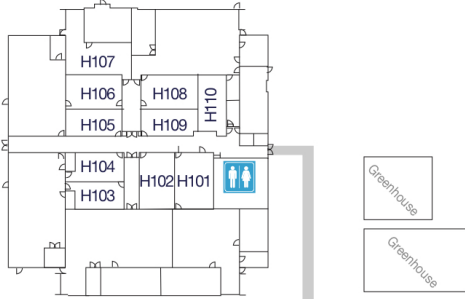


Stadium



Jefferson County High School Main Campus

David A. Holt
Career & Technical
Education Center



Perc/Winds Flow

